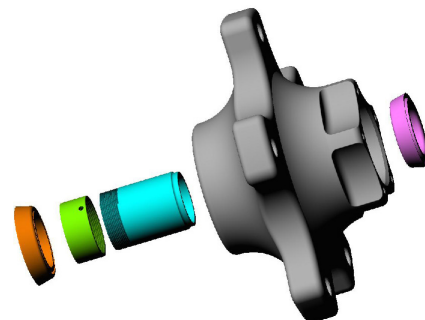
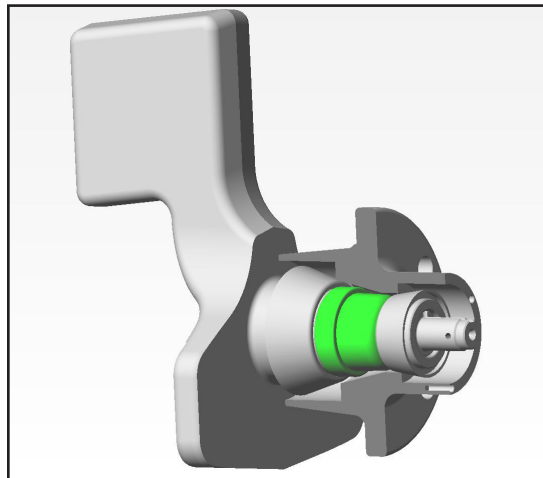




Performance Products

We give our customers the competitive edge!

How to Set Hub Bearing Spacers (Conventional Procedure)



Step 1: With bearings clean and dry (no grease), adjust bearing spacer out to 3/4 of it's maximum length.

Step 2: Install hub with bearing spacer between bearings. Completely tighten spindle nut. Rock hub to check for end play in the bearings.

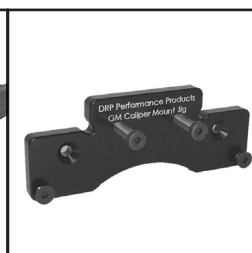
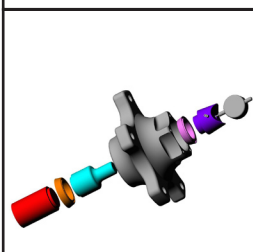
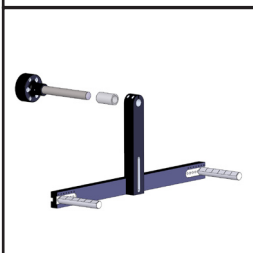
If no end play is noticed, adjust spacer out longer and repeat step 2 until end play exists.

Step 3: Remove spacer and adjust in (shorter) until end plat is removed. To increase accuracy and performance, use a dial caliper or micrometer and measure the spacer height and adjust in (shorter) .001"-.002" per try until proper end play is achieved. (.001" end play typical)

Be sure to completely tighten spindle nut each time. Tighten spacer set screw or use thread locker to prevent accidental adjustment. When no set screw is present, apply thread locker before final adjustment.

Your goal is to set the hub bearings with zero bearing load and no more than .001" end play (with the bearings dry). Some hubs may require slight bearing pre-load (.0005-.001"), consult hub manufacturer for exact specifications.

For additional technical assistance, please call DRP Performance Products at 540-483-4442, Monday-Friday 8:00AM-5:30PM.



© 2010 DRP Performance Products, Inc.
Updated 8-2010

REAL SQUARE
Wheel Alignment Systems for Motorsports

"Let us run with endurance the race that is set before us..." Hebrews 12:1

2089 Crooked Oak Road Rocky Mount, Virginia 24151 888-399-6074 540-484-1756 Fax

www.DRPperformance.com